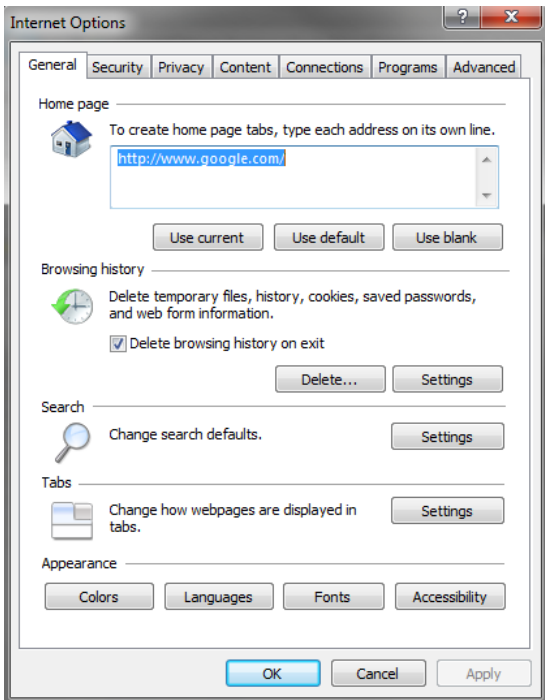


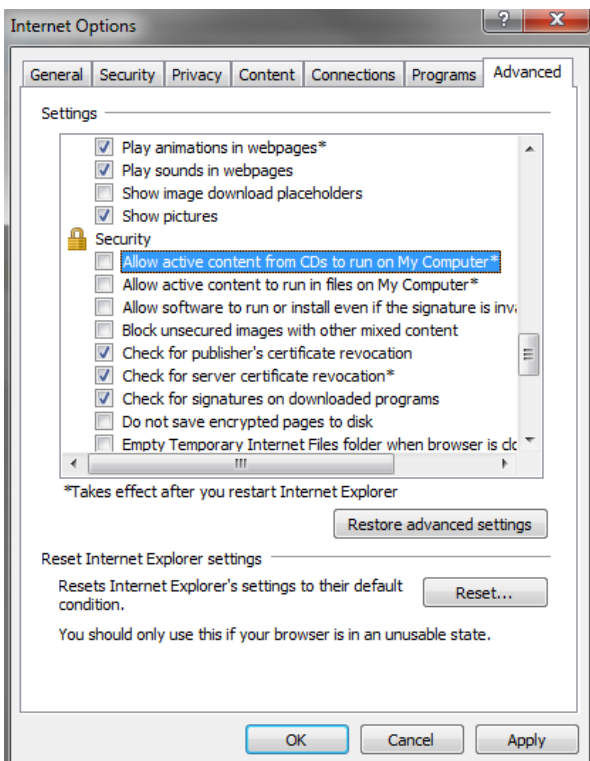
.HTML Manuals – Internet Explorer Security Settings

Open “Internet Options” in Internet Explorer

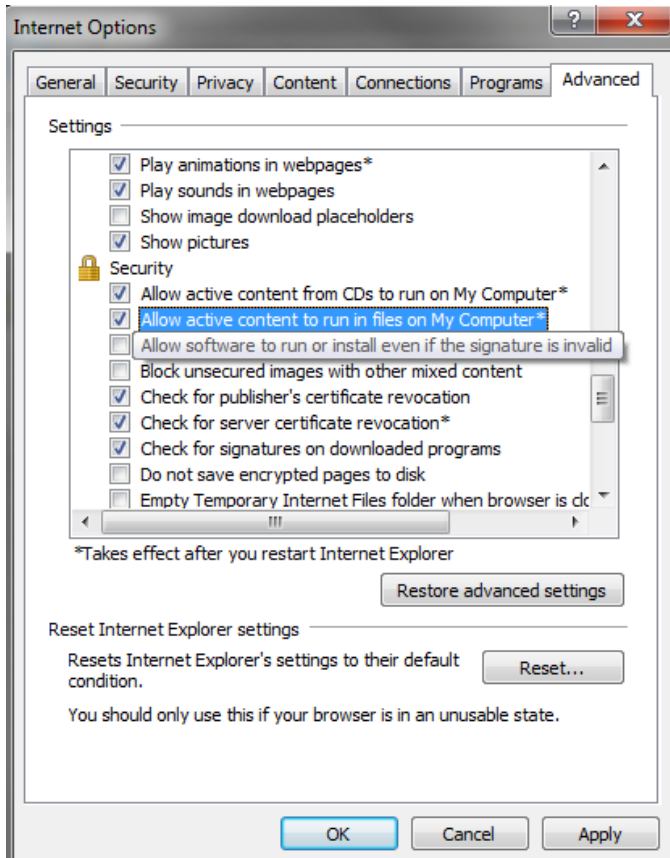


Click on the “Advanced Tab” to the far right.

Under “Settings”, scroll down to the “Security” section



Make sure there's a checkmark next to both **“Allow active content from CDs to run on My Computer”** and **“Allow active content to run in files on My Computer”**



Click on **“Apply”** and then **“OK”**

Shut down Internet Explorer

Open the manual again in Internet Explorer

Select Year and Model

You should now be able to use the manual without issue. It is common to go from one chapter to another and the next chapter to initially look blank. Just click on the **“Service Repair Information”** button right above the year selection. This will refresh your view.

